

SAFETY DIRECT LTD.



Fall Protection Equipment Manufacturer

P.O. Box 3026
Sherwood Park, Alberta T8H 2T1

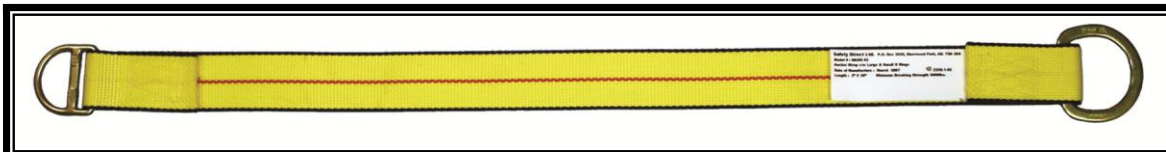
Phone: (780) 464-7139 Fax: (780) 464-7652

e-mail: inquiries@safetydirect.ca

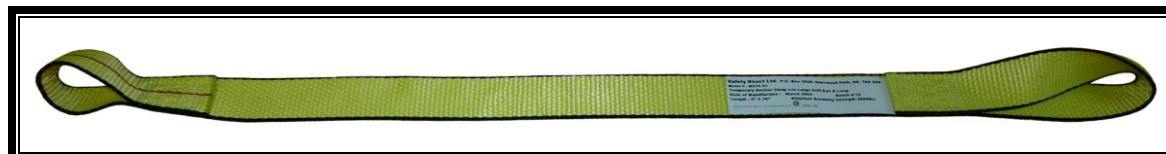
Web site: www.safetydirect.ca

Instructions for MATS, MALD and MADD Anchor Straps

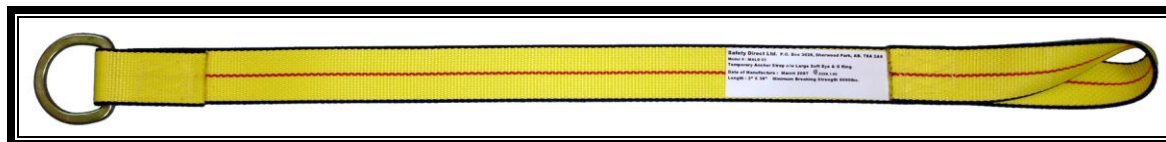
MADD



MATS



MALD



WARNING.

Failure of the user to read and understand all instructions for use of this equipment may result in serious injury or death.

It is recommended that the user complete an approved fall protection program before using this equipment.

Users of this anchor strap must use an approved energy absorbing device or lanyard to connect between the strap and their harness.

General Instructions.

All warning labels and instructions must be understood and followed by the user before using the product.

All users must understand the relevant regulations and usage standards for fall protection, pertaining to this product, in the jurisdiction in which it is being used.

These products must only be used by trained and competent personnel.

All fall protection equipment must be visually inspected prior to each use. All fall protection equipment must be inspected by a competent person on a regular basis.

Fall protection equipment must not be altered or modified in any way.

To reduce the possibility of accidental release, a competent person must ensure that system components are compatible.

All equipment subjected to a fall incident must be removed from service immediately.

Any equipment exhibiting deterioration or deformities must be removed from service immediately.

HAZARD

The following situations should be avoided when using anchor straps:

1. Only one snap hook should be attached to each anchor strap.
2. Snap hooks should not be attached directly to each other.
3. Snap hooks should not be connected back into the body of the anchor strap.
4. Ensure that any connected components are compatible in order to reduce the possibility of snap hook roll-out

Usage Instructions.

Installing MATS, MALD and MADD Anchor Straps on Double Plates on Walls

The anchor should be installed by passing the small eye of the anchor sling through the large twisted eye to choke the anchor around the double plate at the top of the wall.

Space the anchor straps no more than 4ft from the outside corners of the walls and then no more than 6 – 7ft apart on the length of the wall.

The lanyard connecting to the full body harness can now be attached to the loop in the end of the anchor. The anchor is rated for one person and under no circumstances should more than one person be connected to the same anchor.

If the anchor sustains a Fall Arrest it must be removed from service immediately and destroyed.

Installing MATS , MALD and MADD Anchor Straps on Roof Trusses

In all instances when using the anchor straps on roof assemblies the first row of plywood sheathing must be installed and the trusses must be tied together near the peak with continuous lateral bracing securely nailed in place.

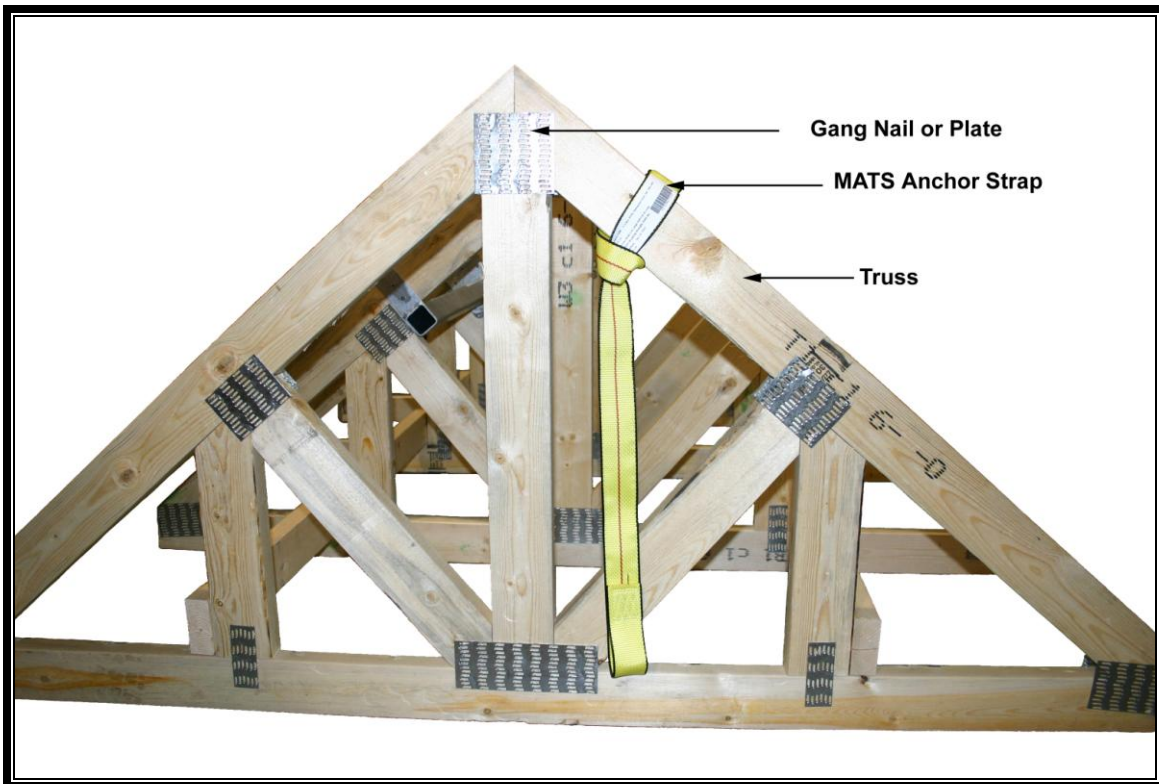


Fig. 1

The anchor should be installed by passing the small eye of the anchor sling through the large twisted eye to choke the anchor around the truss. Ensure that the anchor strap does not come into contact with the gang nails or plates (see Fig. 1).

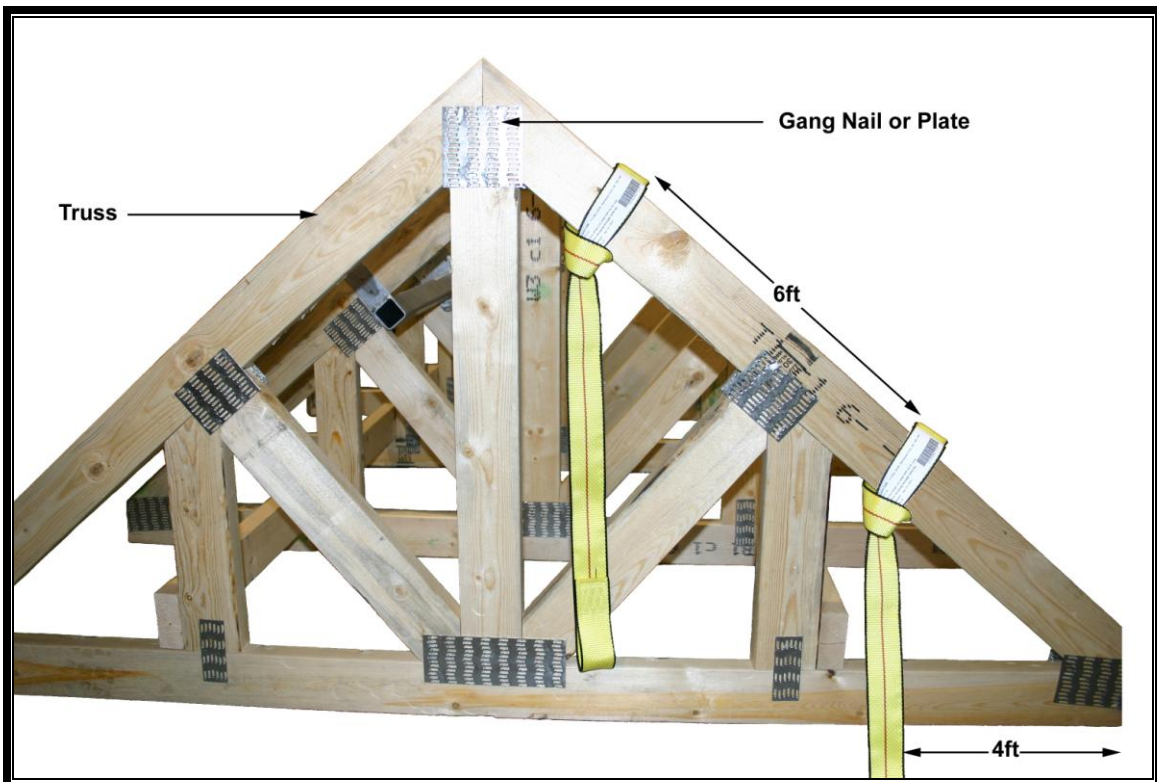


Fig. 2

When installing MATS, MALD and MADD anchors on gable ends do not install the anchor on the double plate, install them on the gable truss. Care must be taken not to install them over a gang nail or gang plate (see Fig 2).

Install the strap at the peak slightly left or right of center to avoid the gang nail or gang plate. Place the remaining anchor straps 6ft. apart with the end strap no more than 4ft. from the end of the truss (see Fig 2).

MATS, MALD and MADD anchor straps may be used on cottage and gable roofs for protection of workers.

Anchor straps, installed on trusses for roof work protection should be no more than 4ft. in from the fascia board and not more than 10ft. apart thereafter.

Do not install anchor straps on the ridge board spacers in between the trusses.

On cottage roofs, anchor straps may be installed on the hip with the same spacing of 4ft. and 10ft. required.

On conventional or hand cut roofs the anchor strap may be installed on the hip or ridge board.

On truss roofs, anchor straps must be installed on the truss, not the hip or ridge board spacers. Be sure to avoid gang nails and gang plates.

When installing sheathing near the anchor strap, be sure to pull the anchor strap to the top side of the roof sheathing. This will ensure protection for the workers to follow.

The anchor strap should pass through the area where the sheathing meets at the ridge or at the hip (see Fig. 3)

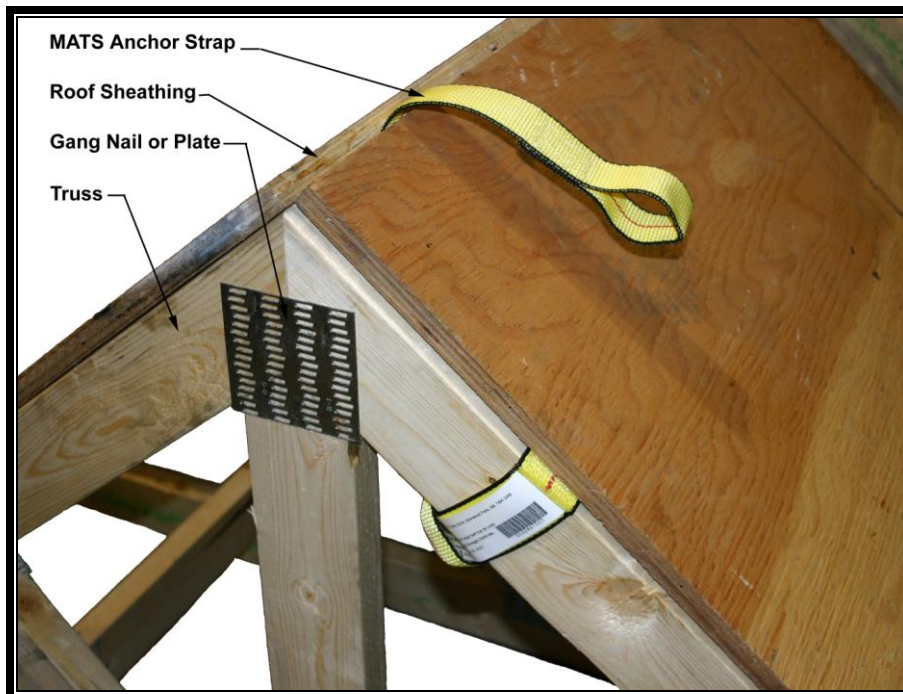


Fig. 3

Inspection.

All anchor straps should be inspected by the user before each use.

A record of these inspections should be kept in a log.

When an inspection reveals any defects the anchor strap, it must be removed from fall arrest service immediately.

The anchor strap should be removed from service immediately if an inspection reveals any of the following:

- a) That the anchor strap has been subjected to fall arrest service.
- b) Evidence of any corrosion or deformation of the hardware components, including cracks, sharp edges, chemical attack, excessive heat or alteration in any way.
- c) Alteration of the anchor strap by the addition or removal of any anchor strap component from the original configuration.
- d) The removal or illegibility of the original labelling.
- e) Damage to the anchor strap material or any spliced terminations or stitch patterns, including, cuts, tears, abrasion, burns, knots, kinks or excessive wear.

Care and Maintenance

Maintenance of equipment should be carried out in accordance with instructions provided by Safety Direct Ltd. Any unusual issues should be addressed with Safety Direct Ltd.

All anchor straps should be stored in a clean, dry area with limited exposure to the following:

- 1. sunlight.
- 2. excessive heat.
- 3. harmful fumes.
- 4. corrosive chemicals or conditions.

Anchor straps to be inspected should be tagged to indicate that it should not be used until after it has been inspected and approved for further service.